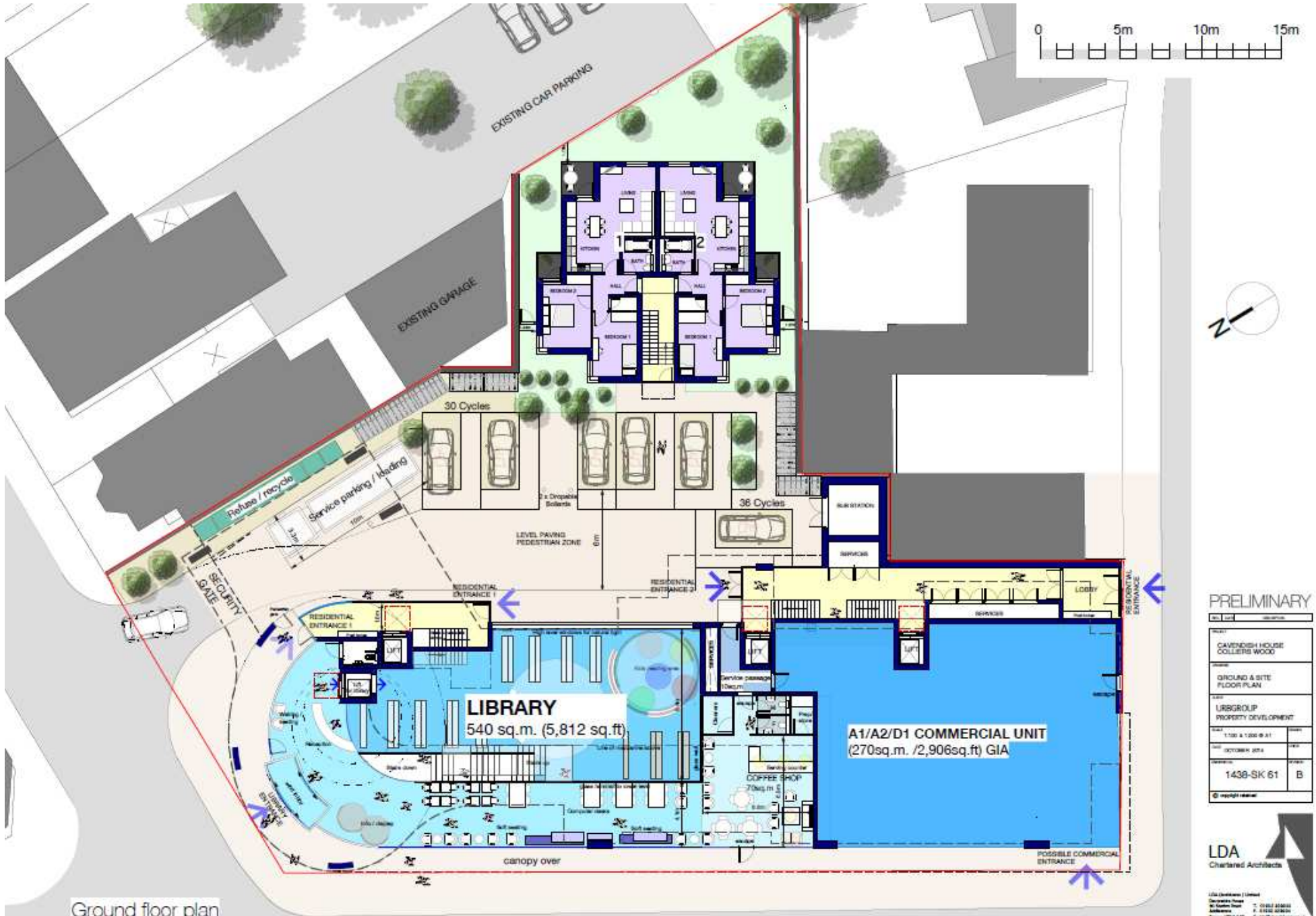




A VISUAL GATEWAY TO THE NEW COLLIERS WOOD DESIGNATED TOWN CENTRE

Appendix 2 – Images of proposed new library



Ground floor plan

PRELIMINARY

PROJECT	CAVENDISH HOUSE COLLETS WOOD		
DATE	1:20 & 1:200 @ A1		
DESCRIPTION	GROUND & SITE FLOOR PLAN		
CLIENT	LRRGROUP PROPERTY DEVELOPMENT		
DATE	OCTOBER 2014		
REF	1438-SK 61	REV	B
© copyright reserved			

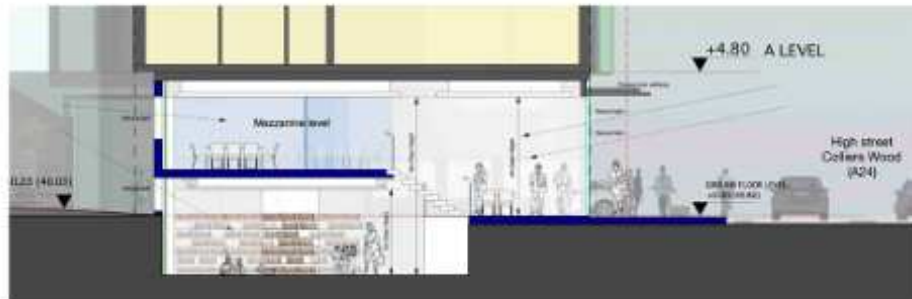
LDA
Chartered Architects

LDA (London) Limited
Owens Road
100, Station Road
London, E16 2RN
T: 0181 2542000
F: 0181 2542001
www.londonlda.com

THE NEW DONALD HOPE LIBRARY



Long section through Library (B-B)



Cross section through Library (A-A)



A View towards the proposed library entrance



Cavendish road elevation - Library



This page is intentionally left blank